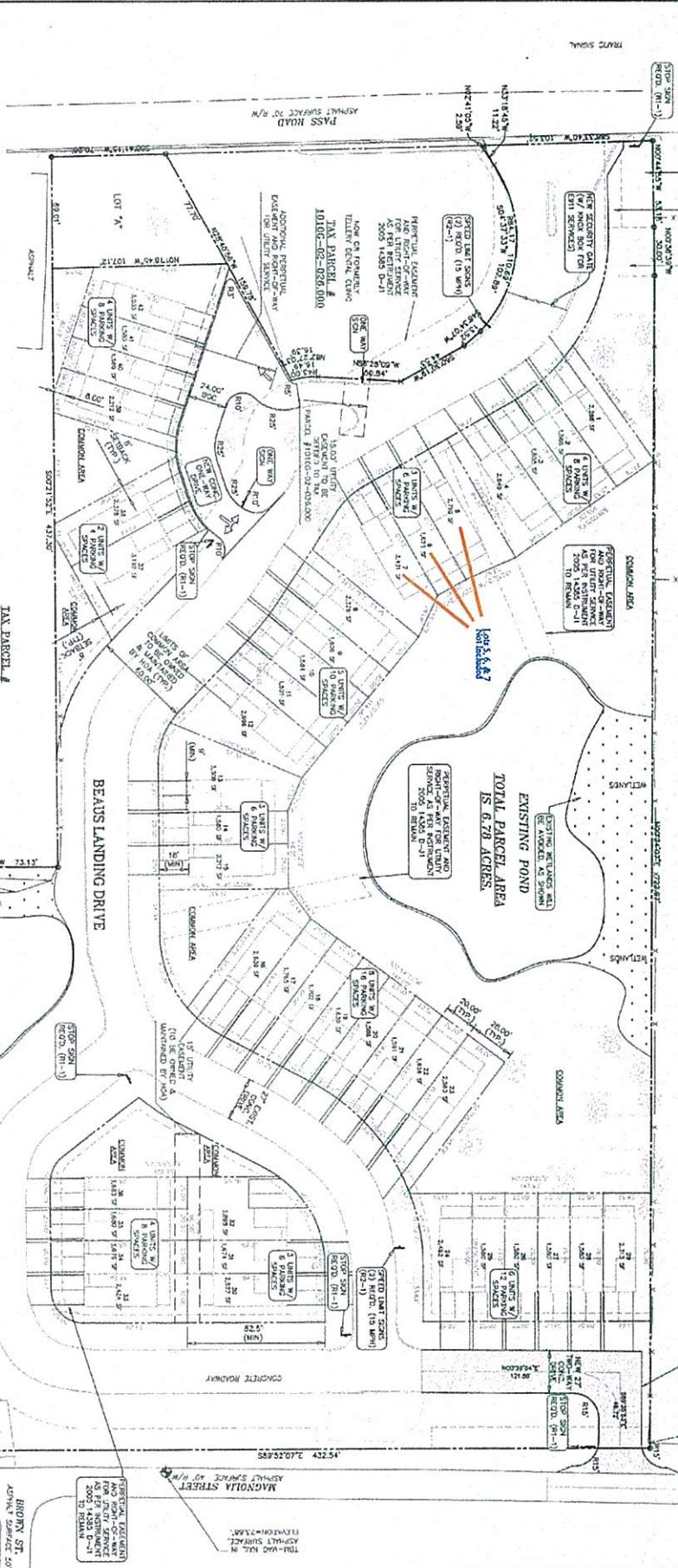


BASIS OF ELLEVATION:
 ELEVATIONS SHOWN HEREIN ARE BASED ON THE MEAN SEA LEVEL DATUM ESTABLISHED BY THE U.S. COAST AND GEODETIC SURVEY IN 1985. A FIRST ORDER CLASS 1 BENCHMARK IS LOCATED AT 2252' 4000.72' HAS.

TAX PARCEL #
 10100-02-026.000

168.28' IF OR ROAD TO BE CONSTRUCTED TO THE N BEAUS LANDING DRIVE TO MANICOLA ENTRANCE W/ MHO BOX FOR EDI SERVICES



SITE NOTES:
 1. ALL DIMENSIONS ARE FROM BACK OF CURB TO BACK OF CURB.
 2. ALL DIMENSIONS AND/OR DIMENSIONS ARE 20' UNLESS NOTED.
 3. SEE SHEET C-2 FOR FURTHER DETAILS.
 4. ALL DIMENSIONS AND/OR DIMENSIONS ARE 20' UNLESS NOTED.
 5. ALL DIMENSIONS AND/OR DIMENSIONS ARE 20' UNLESS NOTED.

SITE LEGEND:
 TYPICAL SIGN
 HEAVY SIGN
 LIGHT SIGN
 CURB SIGN

SETBACK TABLE:
 FRONT 5'
 SIDE 5'
 REAR 5'
 CORNER 5'

UTILITY LEGEND:
 WATER MAIN
 SANITARY MAIN
 GAS MAIN
 TELEPHONE
 CABLE TV
 FIBER OPTIC

LEGEND:
 EXISTING POND
 PROPOSED POND
 EXISTING WETLANDS
 PROPOSED WETLANDS

TAX PARCEL #
 10100-02-026.000

TAX PARCEL #
 10100-02-026.000

GRAPHIC SCALE:
 1" = 20' FT.

HARRIS HEINRICH
 606 1/2 ST. STREET, STE. 200
 GULFPORT, MS 39507
 COUNTY, MISSISSIPPI

Project Title: **BEAU'S LANDING PASS ROAD GULFPORT, MISSISSIPPI**

Sheet Title: **SITE PLAN**

Scale: **C2**

Sheet No: **001-149**